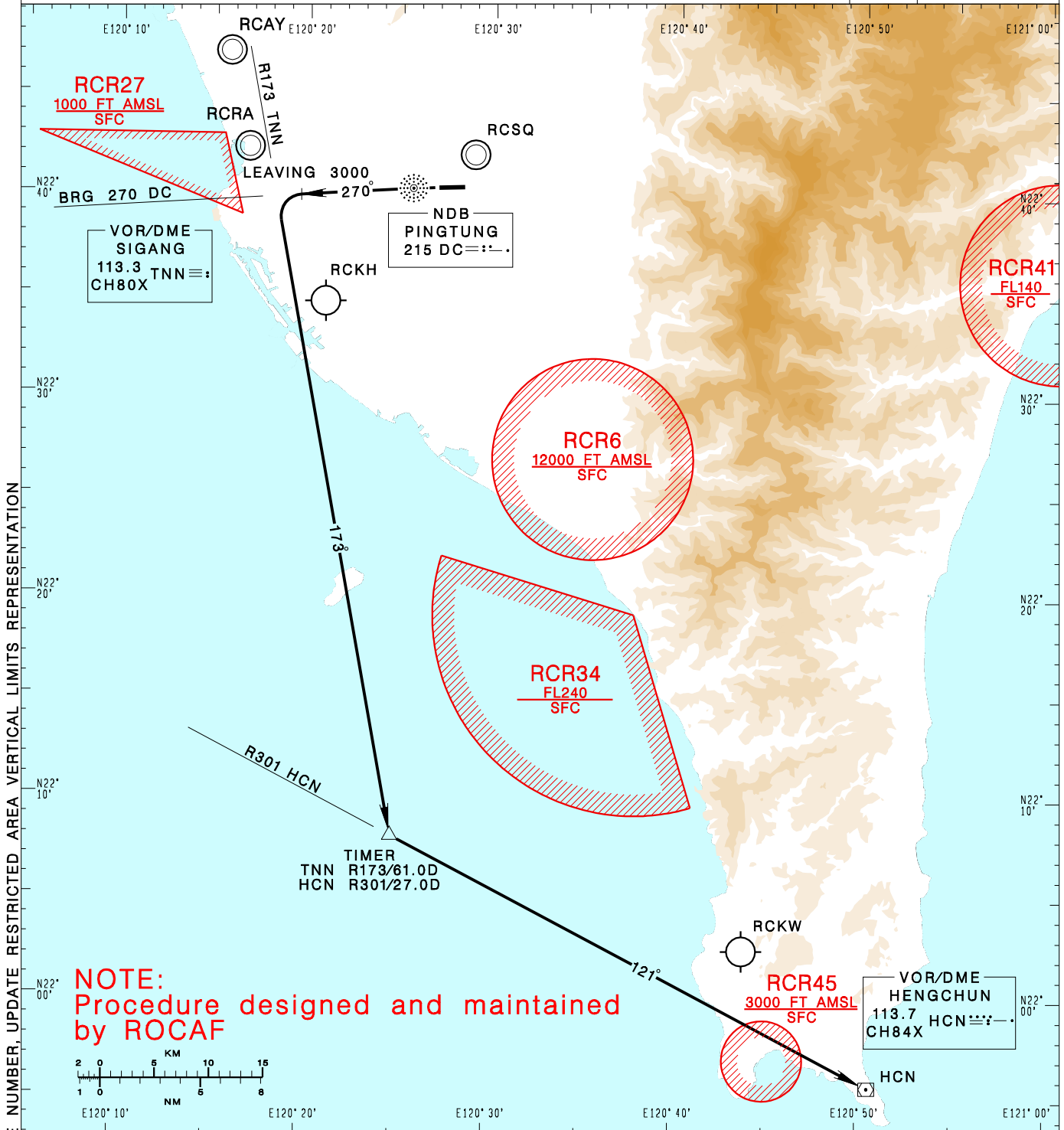


屏東南機場
PINGTUNG SOUTH AD

RCDC SID
KT2B (RWY27)

KAOSIUNG APP 121.1 124.7 328.7 363.8	PINGTUNG SOUTH TWR 126.18 236.6 315.4	GND 275.8		
Apt Elev: 81'		Trans Level: FL130		Trans Alt: 11,000'
BEARINGS ARE MAGNETIC; DISTANCES ARE NAUTICAL MILES; ELEVATIONS, HEIGHTS IN FEET				



CHANGES: NEW PAGE NUMBER, UPDATE RESTRICTED AREA, VERTICAL LIMITS REPRESENTATION

NOTE:
Procedure designed and maintained by ROCAF

KENTING TWO BRAVO DEPARTURE
Maintain RWY HDG to DC. Track DC 270 BRG from DC to 3000ft.
Turn left intercept TNN R-173 to TIMER. Turn left intercept HCN R-301 inbound to HCN to join airway, maintain ATC assigned altitude.

NOTE
CAUTION HIGH TERRAIN BEGINNING AT 9NM EAST OF THE AERODROME.